

# Heaven and Earth Designs

## Neverlasting

Chart No: HAEZIN 14477

Chart Design by Michele Sayetta

Copyrighted Artwork Zindy S. D. Nielsen



Finished Design Size 493 W by 212 H (19-5/8 W X 8-3/8 H inches on 25ct)

(This Chart Contains 16 colors)

Heaven and Earth Designs Inc.

89198 Easy Way Road

Seaside Oregon 97138

320-214-7998

<http://www.heavenandearthdesigns.com>

Copyright Heaven and Earth Designs 2013

**TM/© 2013 Zindy S. D. Nielsen**

**<http://zindy-zone.dk/>**

Congratulations on buying a **Heaven and Earth Designs LLC** Cross Stitch Chart .

We know it will bring you many hours of pleasurable stitching and believe the final result will be something to love and admire forever.

Included with your chart is a clear plastic bag to protect your chart, and a coded thread list for the threads you will need to complete your project. Our charts are designed to use DMC stranded cotton threads and, where appropriate, Kreinik metallic thread.

#### **Chart Instructions:**

1. This chart is made up of several numbered pages beginning at the top left corner of the first page. The pages of chart are laid out from left to right in rows e.g. 1 2 3 4, 5 6 7 8. Although each chart is marked with arrows which indicate the centre , we believe you will find it easier to begin from the top left corner of page 1 and follow the chart page by page to the bottom right corner of the last page.
2. We recommend you stitch your design on either 18 count Aida or 25 count Linen. using 2 strands of cotton over one in each case.
3. At the top of the thread list you will find our recommendation for the fabric colour. We recommend purchasing a piece of fabric that equates to the design size plus 3 inches [75mm] all around, to allow for framing and matting.
4. Because of the large number of stitches, we have found it to be easier if you stitch one 10X10 grid at a time and then continue on to the next 10 x 10 grid.
5. Stitch each page until it is completed and then move on to the next. On each page there is a number at the top left that indicates the page number. On each corner is a number in parenthesis that indicates the connecting page, unless there is not one.
6. Under International Copyright Laws, you may copy the chart for your own use. We recommend that you use a copy as your working document. You may also wish to enlarge the pages to make the symbols easier to read.

**If you have any questions regarding this chart please feel free to contact us.**

Heaven and Earth Designs LLC

320-214-7998

<http://www.heavenandearthdesigns.com>

**Pattern Name:** Neverlasting-Nielsen  
**Designed By:** Michele Sayetta  
**Company:** Heaven and Earth Designs Inc.  
**Copyright:** 2013 Zindy Nielsen®  
**Fabric:** Linen 25, White  
 493w X 212h Stitches  
**Size:** 25 Count, 19-5/8w X 8-3/8h in

















### Floss Used for Full Stitches:

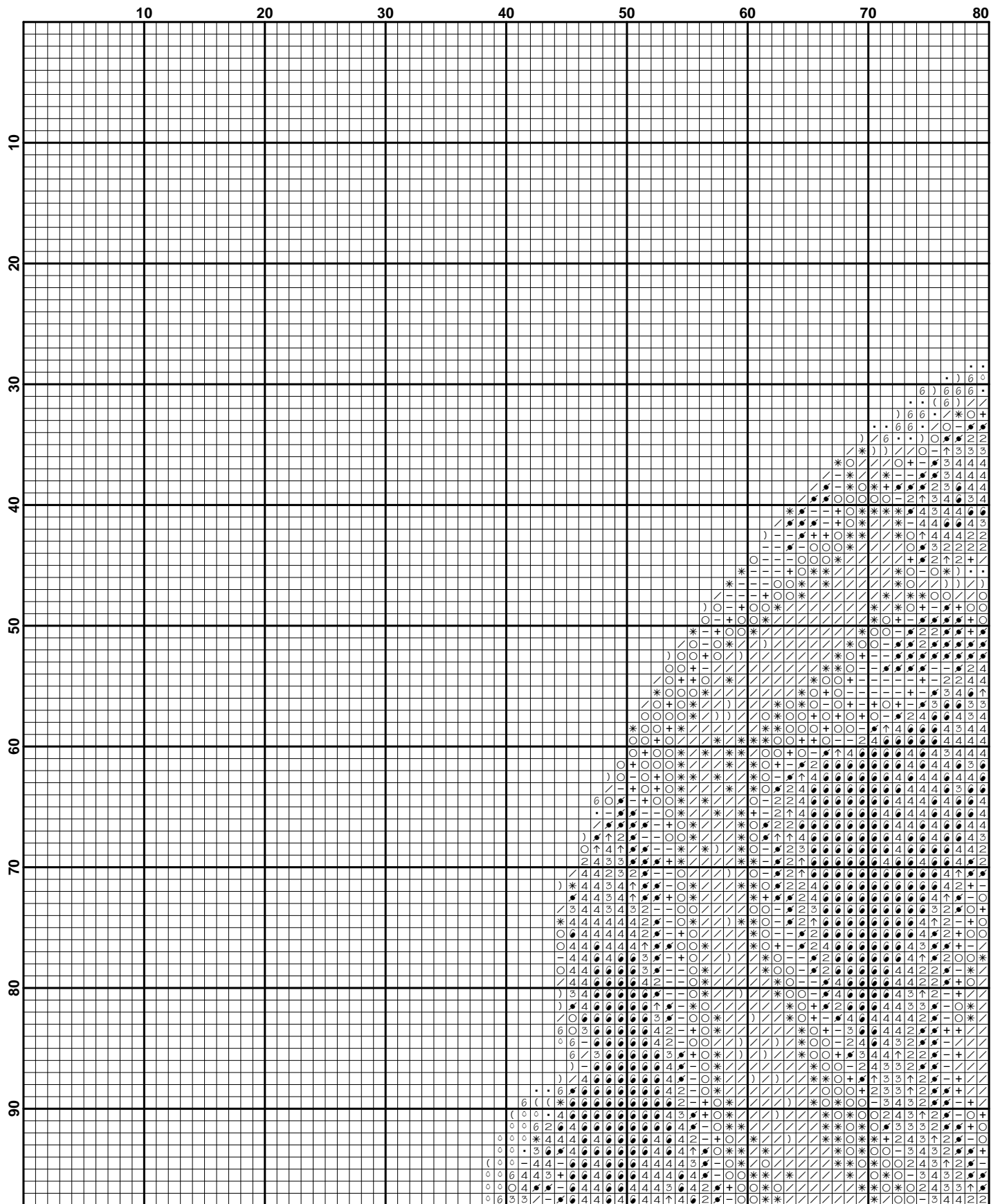
Symbol	Strands	Type	Number	Color
□	6	2	DMC 1	White
■	—	2	DMC 169	Pewter-LT
■	●	2	DMC 310	Black
■	2	2	DMC 317	Pewter Gray
■	○	2	DMC 318	Steel Gray-LT
■	3	2	DMC 413	Pewter Gray-DK
■	✱	2	DMC 414	Steel Gray-DK
■	/	2	DMC 415	Pearl Gray
■	↑	2	DMC 535	Ash Gray-VY LT
■	+	2	DMC 647	Beaver Gray-MD
■	*	2	DMC 648	Beaver Gray-LT
■	▪	2	DMC 762	Pearl Gray-VY LT
■	)	2	DMC 3072	Beaver Gray-VY LT
■	4	2	DMC 3799	Pewter Gray-VY DK
□	(	2	DMC 3865	Winter White
□	0	2	DMC B5200	Snow White

## Usage Summary

Strands Per Skein: 6

Skein Length: 313.0 in

Type	Number	Full	Half	Quarter	Petite	Back(in)	Str(in)	Spec(in)	French	Bead	Skein Est.
 DMC 1	7913	0	0	0	0.0	0.0	0.0	0	0	3.000	
 DMC 169	3746	0	0	0	0.0	0.0	0.0	0	0	2.000	
 DMC 310	3208	0	0	0	0.0	0.0	0.0	0	0	1.000	
 DMC 317	3660	0	0	0	0.0	0.0	0.0	0	0	1.000	
 DMC 318	4839	0	0	0	0.0	0.0	0.0	0	0	2.000	
 DMC 413	1509	0	0	0	0.0	0.0	0.0	0	0	1.000	
 DMC 414	4109	0	0	0	0.0	0.0	0.0	0	0	2.000	
 DMC 415	6217	0	0	0	0.0	0.0	0.0	0	0	2.000	
 DMC 535	940	0	0	0	0.0	0.0	0.0	0	0	1.000	
 DMC 647	1760	0	0	0	0.0	0.0	0.0	0	0	1.000	
 DMC 648	3473	0	0	0	0.0	0.0	0.0	0	0	1.000	
 DMC 762	5427	0	0	0	0.0	0.0	0.0	0	0	2.000	
 DMC 3072	4461	0	0	0	0.0	0.0	0.0	0	0	2.000	
 DMC 3799	3340	0	0	0	0.0	0.0	0.0	0	0	1.000	
 DMC 3865	2813	0	0	0	0.0	0.0	0.0	0	0	1.000	
 DMC B5200	3253	0	0	0	0.0	0.0	0.0	0	0	1.000	



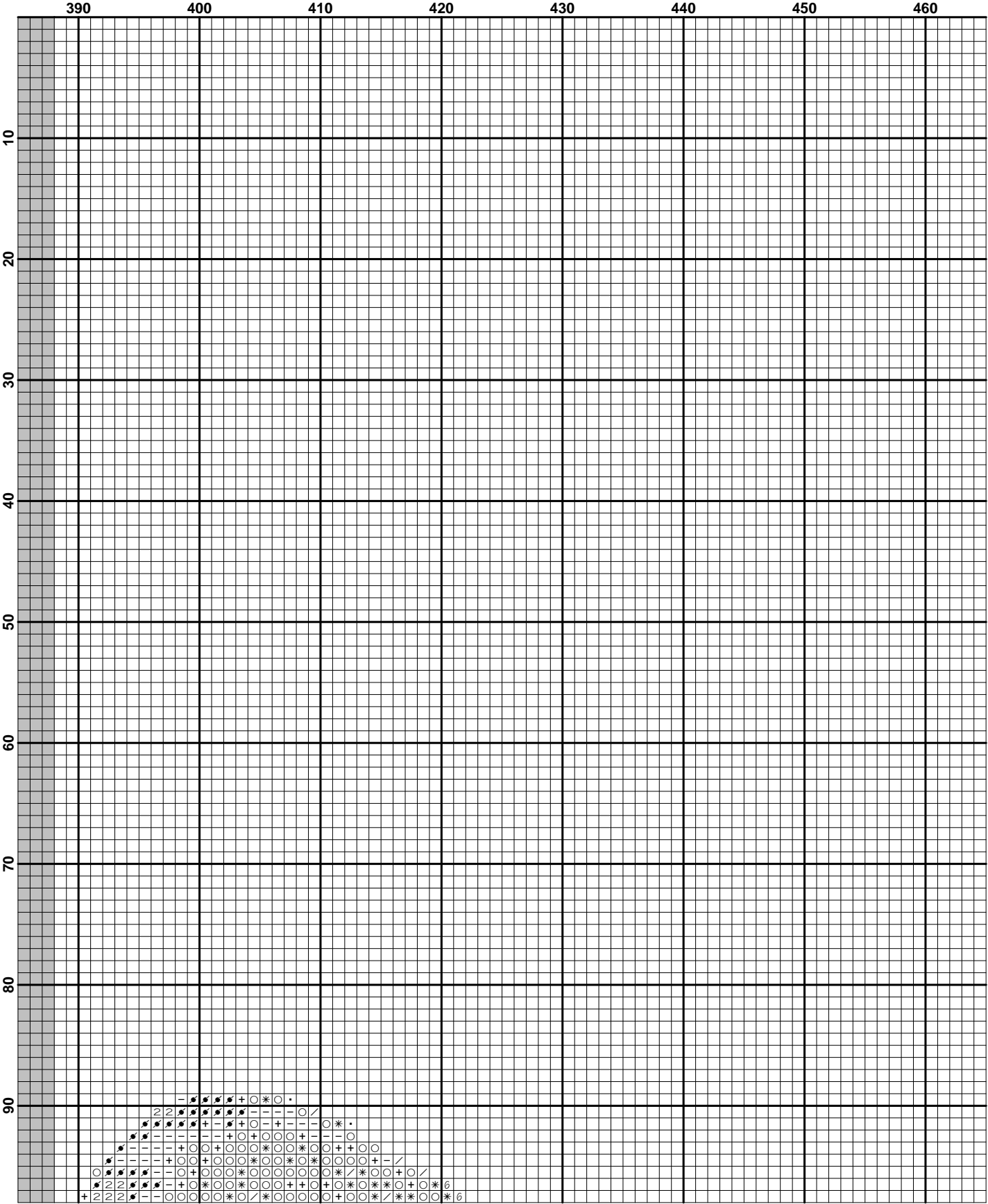
	80	90	100	110	120	130	140	150
10								
20								
30								
40								
50								
60								
70								
80								
90								

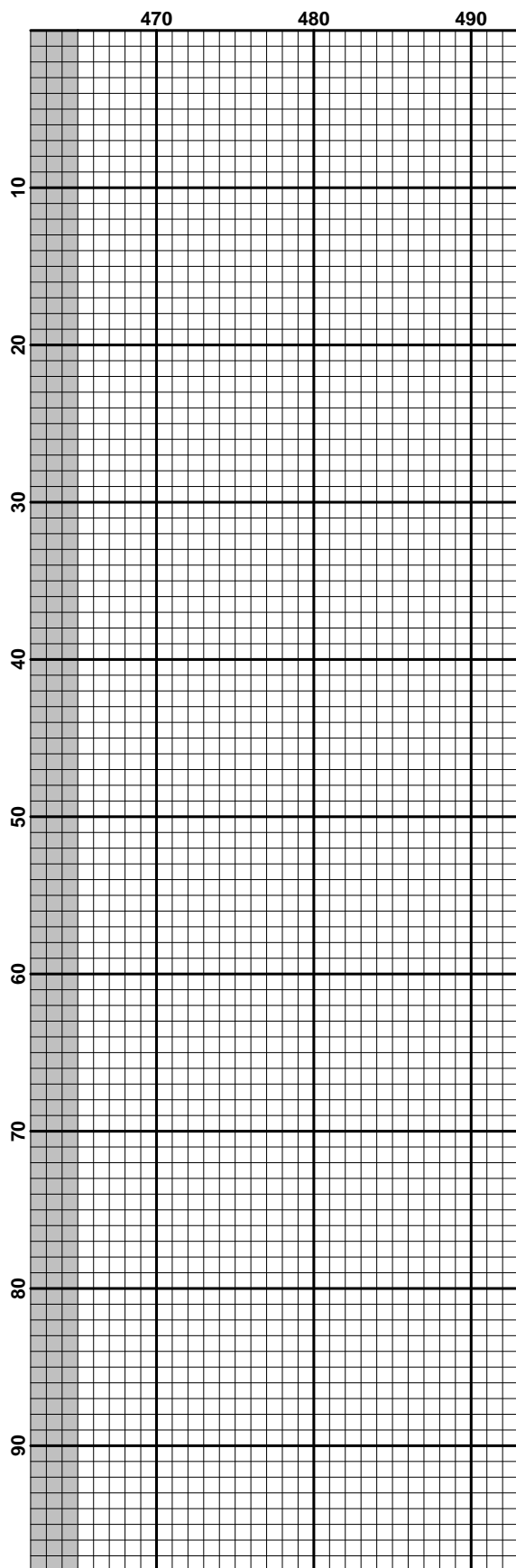
	160	170	180	190	200	210	220	230
10								
20								
30								
40								
50								
60								
70								
80								
90								

	240	250	260	270	280	290	300	310
10	6 (	6 (	6 (	6 (	6 (	6 (	6 (	6 (
20	6 (	6 (	6 (	6 (	6 (	6 (	6 (	6 (
30	6 (	6 (	6 (	6 (	6 (	6 (	6 (	6 (
40	6 (	6 (	6 (	6 (	6 (	6 (	6 (	6 (
50	6 (	6 (	6 (	6 (	6 (	6 (	6 (	6 (
60	6 (	6 (	6 (	6 (	6 (	6 (	6 (	6 (
70	6 (	6 (	6 (	6 (	6 (	6 (	6 (	6 (
80	6 (	6 (	6 (	6 (	6 (	6 (	6 (	6 (
90	6 (	6 (	6 (	6 (	6 (	6 (	6 (	6 (



	310	320	330	340	350	360	370	380
10								
20								
30								
40								
50								
60								
70								
80								
90								





	10	20	30	40	50	60	70	80
100								
110								
120								
130								
140								
150								
160								
170								
180								
190								

[illegible]

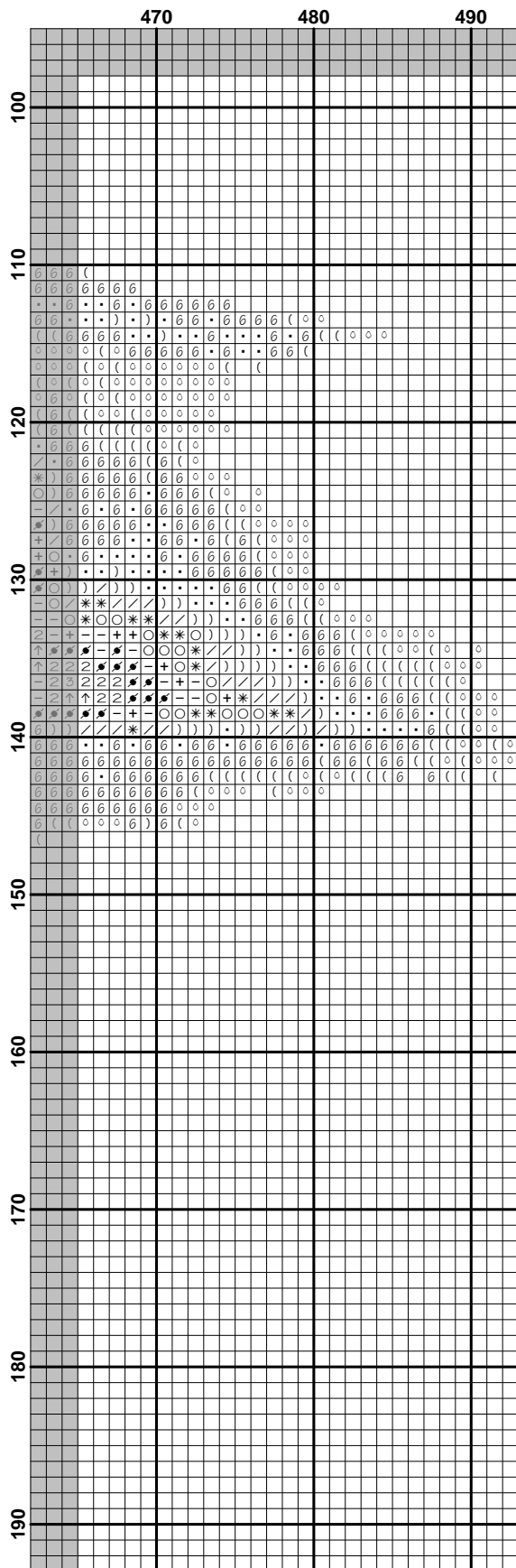
	160	170	180	190	200	210	220	230
100	+	+	+	+	+	+	+	+
110	+	+	+	+	+	+	+	+
120	+	+	+	+	+	+	+	+
130	+	+	+	+	+	+	+	+
140	+	+	+	+	+	+	+	+
150	+	+	+	+	+	+	+	+
160	+	+	+	+	+	+	+	+
170	+	+	+	+	+	+	+	+
180	+	+	+	+	+	+	+	+
190	+	+	+	+	+	+	+	+

	240	250	260	270	280	290	300	310
100	...	...	...	...	...	...	...	...
110	...	...	...	...	...	...	...	...
120	...	...	...	...	...	...	...	...
130	...	...	...	...	...	...	...	...
140	...	...	...	...	...	...	...	...
150	...	...	...	...	...	...	...	...
160	...	...	...	...	...	...	...	...
170	...	...	...	...	...	...	...	...
180	...	...	...	...	...	...	...	...
190	...	...	...	...	...	...	...	...

	310	320	330	340	350	360	370	380
100	100	100	100	100	100	100	100	100
110	110	110	110	110	110	110	110	110
120	120	120	120	120	120	120	120	120
130	130	130	130	130	130	130	130	130
140	140	140	140	140	140	140	140	140
150	150	150	150	150	150	150	150	150
160	160	160	160	160	160	160	160	160
170	170	170	170	170	170	170	170	170
180	180	180	180	180	180	180	180	180
190	190	190	190	190	190	190	190	190



	390	400	410	420	430	440	450	460
100								
110								
120								
130								
140								
150								
160								
170								
180								
190								



[illegible]

[illegible]

	160	170	180	190	200	210	220	230
190								
200								
210								



